

Keysight Technologies

U2701A/U2702A

USB Modular Oscilloscope

Data Sheet



Features

- 100 MHz and 200 MHz bandwidths
- Up to 1 GSa/s maximum sampling rate
- 32 Mpts waveform memory to capture data over a longer period
- Advanced triggering including edge, pulse width and TV helps isolate signals
- Fast Fourier Transform (FFT) and Waveform Math (Addition, Subtraction, Multiplication, Division)
- Autoscale function intuitively displays active signals in the shortest time possible
- Hi-Speed USB 2.0 connectivity
- Dual-play operation: standalone and modular capability
- Bundled with easy-to-use Keysight Measurement Manager (KMM) software
- NEW! Control, automate and simplify with Keysight BenchVue software

Put a Bench in Your Bag

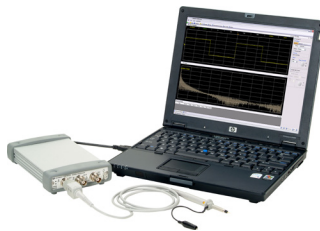
The next time you're called out to solve tough problems in electronic products or processes, leave the bulky transit cases behind. With Keysight Technologies, Inc.'s USB modular instrument (MI) family, you can easily carry powerful test gear in your bag along with your laptop PC.

Our line of MIs includes two oscilloscopes, a DMM, a function generator with arbitrary waveform capability, a source/measure unit and a 4x8 switch matrix. All provide USB 2.0 connectivity (with USBTMC-USB488) standard and plug-and-play simplicity for easy use on the go or on the bench.

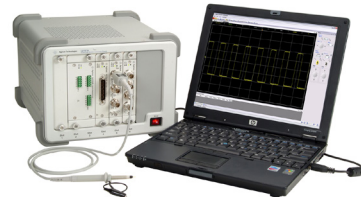


Keysight U2701/2A USB Modular Oscilloscopes

The U2701A and U2702A are 100-MHz and 200-MHz bandwidth oscilloscopes respectively, the size of a typical novel, and flexibly operate as standalone units or as modular units in the U2781A USB modular product chassis.



U2701/2A used as a standalone instrument



U2701/2A used as a modular instrument



Keysight U2700A series USB Modular Instruments won Design News' Golden Mousetrap Award in the 2009 Best Products Category. Design News' Awards Program highlights engineering innovation and product design creativity, and honors the best designs of the past year.

Control, Automate and Simplify with BenchVue – No Programming Needed

Keysight BenchVue software for the PC eliminates many of the issues around bench testing. By making it simple to connect, control instruments, and automate test sequences, you can quickly move past the test development phase and access results faster than ever before with just a few clicks. Dedicated instrument apps allow you to quickly configure the most commonly used measurements and setups for each instrument family. Rapidly build custom test sequences with the integrated Test Flow app to automate and visualize test results without the need for instrument programming. BenchVue supports hundreds of Keysight instrument types and models all from one easy to use application. Control, Automate, Simplify with BenchVue.

Product outlook and dimensions

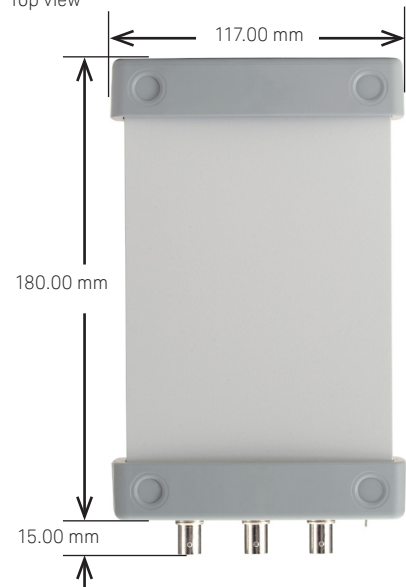
Front view



Rear view



Top view



Standard shipped accessories

- 12 V, 2 A AC/DC Power adapter
- Power cord
- USB Standard A to Mini-B interface cable
- 2 x 10:1 Passive probe 150 MHz 1.2m, N2862A (only applicable for U2701A)
- 2 x 10:1 Passive probe 300 MHz 1.2m, N2863A (only applicable for U2702A)
- L-Mount kit (used with modular product chassis)
- Keysight Automation-Ready CD-ROM (contains the Keysight IO Libraries Suite)
- Keysight USB Modular Products Quick Start Guide
- Keysight USB Modular Products Reference CD-ROM
- Keysight USB Modular Products Quick Reference Card
- Certificate of Calibration

Product characteristics and general specifications

REMOTE INTERFACE

- Hi-Speed USB 2.0
- USBTMC 488.2 Class device¹

POWER CONSUMPTION

- +12 VDC, 2 A
- Installation Category III

OPERATING ENVIRONMENT

- Operating temperature from 0 °C to +50 °C
- Operating humidity at 20% to 85% RH (non-condensing)
- Altitude up to 2000 meters
- Pollution Degree 2
- For indoor use only

STORAGE COMPLIANCE

- Storage temperature from -20 °C to 70 °C
- Storage humidity at 5% to 90% RH (non-condensing)

SAFETY COMPLIANCE

Certified with:

- IEC 61010-1:2001/EN 61010-1:2001 (2nd Edition)
- USA: UL61010-1: 2004
- Canada: CSA C22.2 No.61010-1:2004

EMC COMPLIANCE

- IEC 61326-1:2002/EN 61326-1:1998+A2:2001+A3:2003
- Canada: ICES-001:2004
- Australia/New Zealand: AS/NZS CISPR 11:2004

SHOCK AND VIBRATION

Tested to IEC/EN 60068-2

IO CONNECTOR

BNC connector

DIMENSION (W × D × H)

Module dimension:

- 117.00 mm × 180.00 mm × 41.00 mm (with bumpers)
- 105.00 mm × 175.00 mm × 25.00 mm (without bumpers)

WEIGHT

- 534 g (with bumpers)
- 482 g (without bumpers)

WARRANTY

Three years for U2701A/U2702A

Three months for standard shipped accessories

Optional accessories

- BNC cable, U2921A-100
- USB Secure cable, U2921A-101
- 1:1 Passive probe 20 MHz, 1.5 m, 10070C (Order no.: U2701A-200)
- 10:1 Passive probe 150 MHz 1.2m, N2862A (only applicable for U2701A)
- 10:1 Passive probe 300 MHz 1.2m, N2863A (only applicable for U2702A)

1. Compatible with Microsoft Windows operating systems only. Requires a direct USB connection to the PC so the appropriate driver can be installed in the USB modular instrument.

Performance specifications¹

Vertical system: oscilloscope channels

Bandwidth (-3 dB)	U2701A: DC to 100 MHz U2702A: DC to 200 MHz
-------------------	--

Scope channel triggering

Trigger sensitivity	< 10 mV/div: greater of 1 div or 5mV; ≥ 10 mV/div: 0.6 div
---------------------	--

Performance characteristics²

Acquisition: oscilloscope channels

Real time sample rate		
– 2 channels interleaved	1 GSa/s	
– Each channel	500 MSa/s	
Standard memory depth	Normal	Single-shot
– 2 channels interleaved	32 Mpts	64 Mpts
– Each channel	16 Mpts	32 Mpts
Vertical resolution	8 bits	
Peak detection	Yes	
Averaging	Any number from 1 to 999	
Filter	Sin(x)/x interpolation for time base 1 ns to 100 ns	
Sweep modes	Auto, normal, single	

Vertical system: oscilloscope channels

Scope channels	U2701A/U2702A: Ch 1 and Ch 2 simultaneous acquisition	
AC coupled	U2701A: 3.5 Hz to 100 MHz U2702A: 3.5 Hz to 200 MHz	
Calculated rise time (= 0.35/bandwidth)	U2701A: 3.5 ns U2702A: 1.75 ns	
Single-shot bandwidth	U2701A: 100 MHz U2702A: 200 MHz	
Range	2 mV/div to 5 V/div (1 MΩ)	
Maximum input ³	CAT I 30 Vrms, 42 Vpk	
Offset range	±4 div Example: ±8 mV on 2 mV/div; ±20 V on 5 V/div	
Dynamic range	±4 div	
Input impedance	1 MΩ: ≈ 16 pF	
Coupling	AC, DC, Ground	
BW limit	≈ 25 MHz	
Standard probes	10:1 Passive probe 150 MHz 1.2 m 10:1 Passive probe 300 MHz 1.2 m	
ESD tolerance	±2 kV	
Noise peak-to-peak	3 mVpp	
DC vertical offset accuracy	≤ 200 mV/div: ±0.1 div ±2.0 mV ±0.5% offset value; > 200 mV/div: ±0.1 div ±2.0 mV ±1.5% offset value	
DC vertical gain accuracy	±4.0% of full scale	

1. All specifications are warranted. specifications are valid after a 30-minute warm-up and within ±100 °C of last calibration temperature.
2. All characteristics are typical performance values and are not warranted. Characteristics are valid after a 30-minute warm-up period and within ±10 °C of last calibration temperature.
3. Under standalone use, you are only allowed to measure up to CAT I 30 Vrms. For high-voltage measurement up to CAT I 300 Vrms, you must install the L-Mount kit on the U2701A/U2702A before plugging it into the product chassis. Ensure that the L-Mount kit installed on your modular oscilloscope is screwed to the product chassis to ensure proper chassis grounding. Note that you are required to use the provided 10:1 probes (N2862A/N2863A) for high-voltage measurements to avoid damaging your instrument.

Performance characteristics¹ (continued)**Vertical system: oscilloscope channels (continued)**

Single-cursor accuracy	±{DC vertical gain accuracy + DC vertical offset accuracy + 0.2% full scale (~1/2 LSB)} Example: For 50 mV signal, scope set to 10 mV/div (80 mV full scale), 5 mV offset, Accuracy = ±{4.0% (80 mV) + 0.1(10 mV) + 2.0 mV + 0.5% (5 mV) + 0.2% (80 mV)} = ±6.385 mV
Dual-cursor accuracy	±{DC vertical gain accuracy + 0.4% full scale (~1 LSB)} Example: For 50 mV signal, scope set to 10 mV/div (80 mV full scale), 5 mV offset, Accuracy = ±{4.0% (80 mV) + 0.4% (80 mV)} = ±3.52 mV

Horizontal

Range	1 ns/div to 50 s/div
Time base accuracy	20 ppm
Delay range	Pre-trigger: -100 % Post-trigger: +100 %
Modes	Main, roll, XY
XY	Yes
Reference position	Center

Trigger System

Sources	Ch 1, Ch 2, Ext (not applicable for TV trigger)
Modes	Normal, single, auto trigger
Hold off time	60 ns
Selections	Edge, pulse width, TV
– Edge	Triggers on a rising or falling edge, alternating, or either edge of any source
– Pulse width	Triggers on a pulse width greater than, equal to, or less than a specified time limit, with time limits ranging from 16 ns to 10 s Minimum lower limit: 8 ns Minimum upper limit: 16 ns Maximum pulse width setting: 10 s
– TV	Triggers on one of three standard television waveforms: NTSC, PAL, SECAM TV trigger sensitivity: 0.6 division of sync signal. Modes supported include Field 1, Field 2, all fields, or any line within a field
Autoscale	Single-button automatic setup of all channels

Oscilloscope channel triggering

Range (internal)	±4 div from center screen
Coupling	AC (< 15 Hz) LF reject (~ 35 kHz) HF reject (~ 35 kHz)

External (EXT) triggering

Input impedance	1 MW: ≈ 16 pF
Maximum input	CAT I 30 Vrms, 42 Vpk
Range	DC coupling: trigger level ±1.25 V and ±2.5 V
EXT trigger pulse width	> 2.5 ns

1. All characteristics are typical performance values and are not warranted. Characteristics are valid after a 30-minute warm-up period and within ±10 °C of last calibration temperature.

Performance characteristics¹ (continued)**External (EXT) triggering (continued)**

Trigger level sensitivity	For ± 1.25 V range setting: DC to 100 MHz: 100 μ V > 100 MHz: 200 μ V For ± 2.5 V range setting: DC to 100 MHz: 250 μ V > 100 MHz: 500 μ V
---------------------------	---

Display

Interpolation	Sin(x)/x
Display types	Dots and vectors
Persistence	Off, infinite
Format	XY, roll

Measurement features

Automatic measurements	Measurements are continuously updated. Cursors track last selected measurement.
Voltage	Peak-to-peak, maximum, minimum, average, amplitude, top, base, Vrms, overshoot, preshoot, crest, standard deviation, cycle RMS, RMS AC
Time	Frequency, period, +width, -width, +duty cycle, -duty cycle, rise time, fall time, delay, phase
Frequency	Maximum peak
Cursors	<ul style="list-style-type: none"> - Modes: Manual - Type: Time, voltage and frequency (FFT) - Measurements: DT, DV, frequency, Peak Scan (FFT), DPeak
Math functions	Add, subtract, multiply, FFT, divide

FFT

Points	1250 points (for 500 ns and above)
Source of FFT	Source channels 1 or 2
Window	Hanning, Hamming, Blackman-Harris, Rectangular, Flattop
Noise floor	-50 dB to -90 dB depending on averaging
Amplitude	Display in dBV
Maximum frequency	250 MHz

1. All specifications are warranted. specifications are valid after a 30-minute warm-up and within ± 100 °C of last calibration temperature.

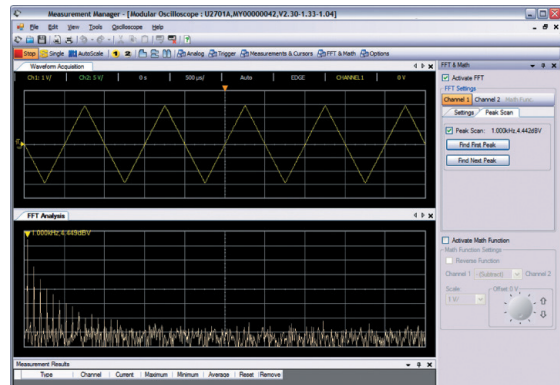
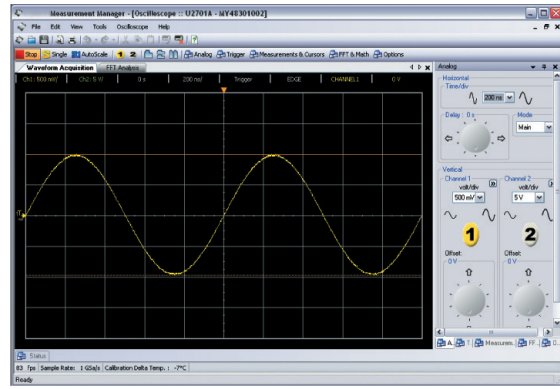
Keysight Measurement Manager

The Keysight Measurement Manager (KMM) is an application data viewer software that comes with the standard purchase of the U2700A Series USB modular instruments. This software is designed to help you perform quick device configuration, data logging and data acquisition with the modular instruments.

Supported features found in the U2701A/U2702A USB modular oscilloscope:

- Averaging
- Command Logger and Code Converter
- Self-test
- Self-calibration
- Option to save the current instrument configuration to a file
- Data logging and export feature to CSV, HTML and text only format files that can be printed
- Trigger settings between modules in the instrument chassis with Star trigger and Master/Slave trigger

Prior to installing the Keysight Measurement Manager software, ensure that your PC meets the following minimum system requirements for installation and operation.



Requirement	Windows XP operating systems	Windows Vista operating systems	Windows 7 operating systems
Operating system	Windows XP Service Pack 3 (or later) ¹	Windows Vista (32-bit) Service Pack 1 and 2 ²	Windows 7 (32-bit and 64-bit) ^{3,4}
Processor speed	600 MHz or higher required, 800 MHz recommended	1 GHz 32-bit (x86)	3 GHz 32-bit (x86)
Memory	256 MB minimum (1 GB or greater recommended)	1 GB minimum	2 GB minimum
Hard-disk space	1.5 GB minimum	1.5 GB minimum	1.5 GB minimum
Video	Super VGA (800 × 600) 256 colors or more	Support for DirectX 9 graphics with 128 MB graphics memory recommended ⁵	Support for DirectX 9 graphics with 128 MB graphics memory recommended ⁵
CD-ROM drive or DVD-ROM drive ⁶	Required	Required	Required
Browser	Microsoft Internet Explorer 5.01 or greater	Microsoft Internet Explorer 7 or greater	Microsoft Internet Explorer 7 or greater

1. Supported Windows XP editions – Home or Professional
2. Supported Windows Vista (32-bit) editions – Home Basic, Home Premium, Business, or Ultimate
3. Supported Windows 7 (32-bit and 64-bit) editions – Home Basic, Home Premium, Professional, Enterprise, or Ultimate
4. Keysight Measurement Manger for Windows 7 64-bit support is a 32-bit application running on a WOW64 (Windows-on-Windows 64-bit) emulator.
5. Super VGA graphics is supported for Windows Vista and Windows 7.
6. The type of media provided with the product determines whether a CD-ROM drive or DVD-ROM drive is required.

Software requirements

Keysight IO Libraries Suite 15.1 and above ¹

Keysight T&M Toolkit Runtime version 2.12

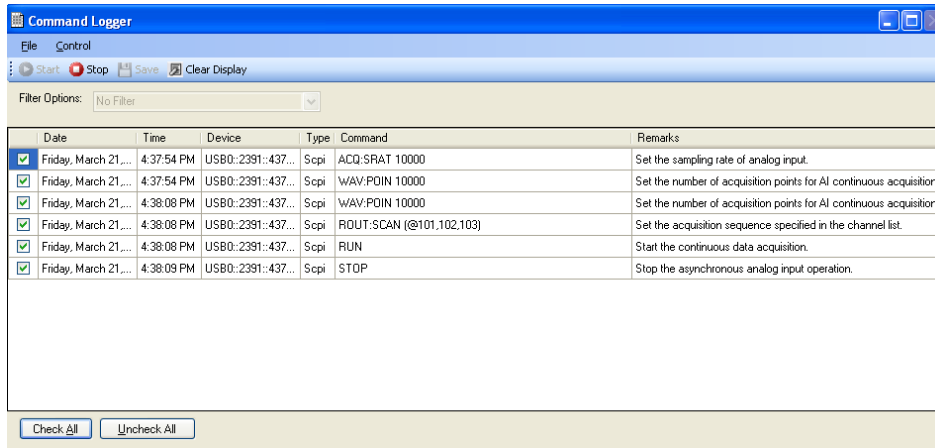
Keysight T&M Toolkit Redistributable Package 2.1 patch ²

Microsoft .NET Framework version 2.02

1. Available on the Keysight Automation-Ready CD-ROM
2. Bundled with Keysight Measurement Manager software application installer

Command logger

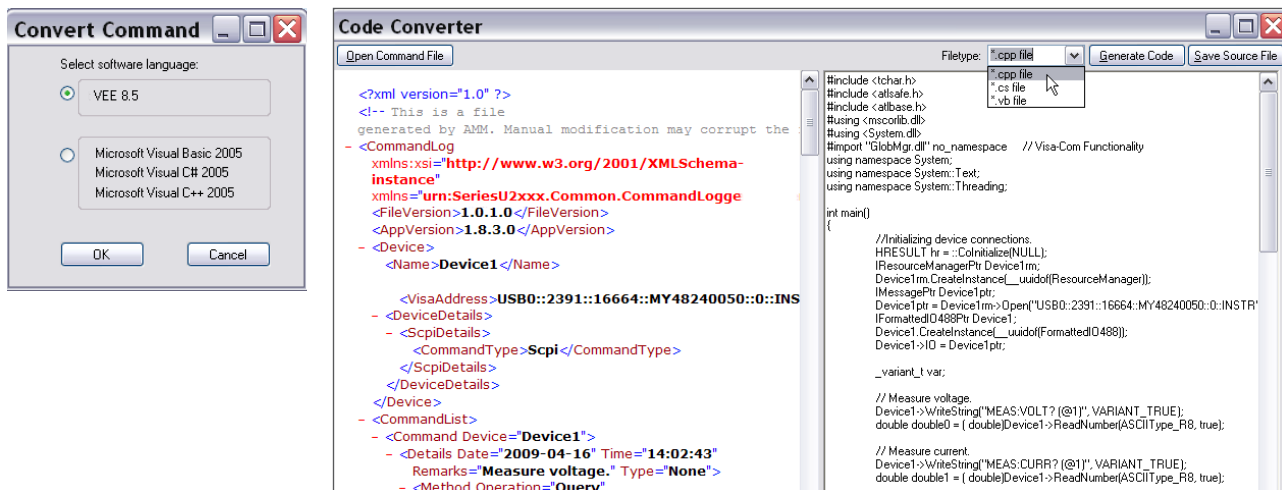
The Command Logger function allows users to log SCPI or IVI-COM command sequences used to control your Keysight USB modular product. The function also captures the time each command is executed. Review the configuration commands at your own pace, or convert the commands to other programming languages with the KMM's Code Converter.



Date	Time	Device	Type	Command	Remarks
Friday, March 21...	4:37:54 PM	USB0::2391::437...	Scpi	ACQ:SRAT 10000	Set the sampling rate of analog input.
Friday, March 21...	4:37:54 PM	USB0::2391::437...	Scpi	WAV:POIN 10000	Set the number of acquisition points for AI continuous acquisition.
Friday, March 21...	4:38:08 PM	USB0::2391::437...	Scpi	WAV:POIN 10000	Set the number of acquisition points for AI continuous acquisition.
Friday, March 21...	4:38:08 PM	USB0::2391::437...	Scpi	ROUT-SCAN (@101,102,103)	Set the acquisition sequence specified in the channel list.
Friday, March 21...	4:38:08 PM	USB0::2391::437...	Scpi	RUN	Start the continuous data acquisition.
Friday, March 21...	4:38:09 PM	USB0::2391::437...	Scpi	STOP	Stop the asynchronous analog input operation.

Code converter

KMM Code Converter comes with two converters: the Keysight VEE Code Converter, and the Microsoft C#/C++/VB Code Converter, allowing you to convert logged SCPI/IVI-COM commands to snippets of VEE Pro, Visual Basic, C++ and C# codes. You can now convert SCPI commands without needing advanced programming skills, helping you program with ease and allowing you to integrate your programs seamlessly for automated tests.



Convert Command

Select software language:

VEE 8.5

Microsoft Visual Basic 2005

Microsoft Visual C# 2005

Microsoft Visual C++ 2005

OK Cancel

Code Converter

Open Command File

Filetype: .cpp file, .cs file, .vb file

Generate Code Save Source File

```
<?xml version="1.0" ?>
<!-- This is a file
generated by AMM. Manual modification may corrupt the
- <CommandLog
xmlns:xsi="http://www.w3.org/2001/XMLSchema-
instance"
xmlns="urn:SeriesU2xxx.Common.CommandLogge
<FileVersion>1.0.1.0</FileVersion>
<AppVersion>1.8.3.0</AppVersion>
- <Device>
<Name>Device1</Name>
<VisaAddress>USB0::2391::16664::MY48240050::0::INS
- <DeviceDetails>
- <ScpiDetails>
<CommandType>Scpi</CommandType>
</ScpiDetails>
</DeviceDetails>
</Device>
- <CommandList>
- <Command Device="Device1">
- <Details Date="2009-04-16" Time="14:02:43"
Remarks="Measure voltage." Type="None">
- <Method Operation="Query"
```

```
#include <char.h>
#include <calstate.h>
#include <calbase.h>
#include <mscorlib.dll>
#include <System.dll>
#include "GlobMgr.dll" no_namespace // Visa-Com Functionality
using namespace System;
using namespace System::Text;
using namespace System::Threading;

int main()
{
//Initializing device connections
HRESULT hr = ::CoInitialize(NULL);
IResourceManagerPtr Device1rm;
Device1rm.CreateInstance(__uuidof(ResourceManager));
IMessagePtr Device1ptr;
Device1ptr = Device1rm->Open("USB0::2391::16664::MY48240050::0::INSTR");
IFormattedIO488Ptr Device1;
Device1.CreateInstance(__uuidof(FormattedIO488));
Device1->IO = Device1ptr;

_variant_t var;

// Measure voltage
Device1->WriteString("MEAS:VOLT? (@1)", VARIANT_TRUE);
double double0 = (double)Device1->ReadNumber(ASCIIType_R8, true);

// Measure current
Device1->WriteString("MEAS:CURR? (@1)", VARIANT_TRUE);
double double1 = (double)Device1->ReadNumber(ASCIIType_R8, true);
```


USB Modular Oscilloscope App within BenchVue

BenchVue software for the PC makes it simple to connect, control, capture and view multiple Keysight instruments simultaneously with no additional programming. You can derive answers faster than ever by easily viewing, logging and exporting measurement data and screen images with a few clicks from a single environment.

- Visualize multiple measurements simultaneously
- Easily log data, screen shots and system state
- Rapidly prototype custom test sequences
- Recall past states of your USB Modular to replicate results
- Export measurement data in the desired format fast
- Quickly access manuals, drivers, FAQs and videos

The USB Modular Oscilloscope App within BenchVue allows you to quickly configure and control the U2701A/2A Oscilloscope to capture and annotate screen images, record trace data and log measurements. This capability provides you with the insight you need to solve your measurement challenges and detect glitches or bugs in signals. In just a few clicks, you can also record measurements and export results to popular PC-friendly applications such as Microsoft Excel and Microsoft Word for further analysis. Additionally, you can also export data to HDF5. Upgrading to the Pro version (BV0024) will provide you with unrestricted data logging with limit checking and alerts.



View measurements across USB DAQ, modular and bench instruments all on one BenchVue interface

Get started with BenchVue, downloadable at no cost at www.keysight.com/find/benchvue.



Controlling your oscilloscope is as easy as point and click. You can also flexibly view your signals in both waveform and data logger views.

Ordering Information

Model	Description
U2701A	USB modular oscilloscope (100 MHz)
U2702A	USB modular oscilloscope (200 MHz)

Optional accessories

Model	Description
N2862A	10:1 pas sive probe, 150 MHz, 1.2 m (for U2701A)
N2863A	10:1 passive probe, 300 MHz, 1.2 m (for U2702A)
U2701A-200	10070C 1:1 passive probe, 20 MHz, 1.5 m
U2921A-100	BNC cable, 1.2 m
U2921A-101	USB secure cable, 2 m

Other products in the Keysight USB Modular Test Instruments Family

U2722A/U2723A USB Modular Source Measure Unit

Features:

- Three-channel SMU with four-quadrant source/measure operation
High measurement sensitivity of 100 pA with 16-bit resolution for all voltage and current ranges
- 0.1% basic accuracy
- Embedded test scripts (for U2723A)

For more information: <http://www.keysight.com/find/U2722A>
<http://www.keysight.com/find/U2723A>



U2741A USB Modular Digital Multimeter (DMM)

Features:

- Fast reading speed (up to 100 Sa/s)
- Wide range of basic measurement functions, including frequency and temperature measurements

For more information: <http://www.keysight.com/find/U2741A>



U2751A USB Modular Switch Matrix

Features:

- Minimal cross-talk of -30 dB at 45 MHz wide bandwidth
- High bandwidth at 45 MHz without terminal block
- Capability to test up to four devices-under-test (DUTs)
- Works with other Keysight instruments for multi-point testing

For more information: <http://www.keysight.com/find/U2751A>



U2761A USB Modular Function/Arbitrary Waveform Generator

Features:

- Direct digital synthesis (DDS) waveform generator
- Pulse generator that can generate pulse signal as stimulus
- Easy customization with Arbitrary Waveform Editor
- Internal modulation capability simplifies test setup

For more information: <http://www.keysight.com/find/U2761A>



U2781A USB Modular Product Chassis

Features:

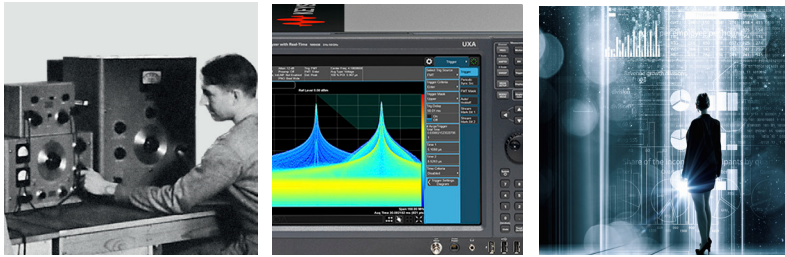
- Expansion of channels for each modular product
- Multiple instrument synchronization
- Internal and external 10 MHz reference clock
- High-speed USB 2.0
- SSI/Star trigger bus synchronization between external trigger source and modules

For more information: <http://www.keysight.com/find/U2781A>



Evolving

Our unique combination of hardware, software, support, and people can help you reach your next breakthrough. **We are unlocking the future of technology.**



From Hewlett-Packard to Agilent to Keysight

myKeysight

myKeysight

www.keysight.com/find/mykeysight

A personalized view into the information most relevant to you.

www.axistandard.org

AdvancedTCA® Extensions for Instrumentation and Test (AXIe) is an open standard that extends the AdvancedTCA for general purpose and semiconductor test. Keysight is a founding member of the AXIe consortium. ATCA®, AdvancedTCA®, and the ATCA logo are registered US trademarks of the PCI Industrial Computer Manufacturers Group.



www.lxistandard.org

LAN eXtensions for Instruments puts the power of Ethernet and the Web inside your test systems. Keysight is a founding member of the LXI consortium.



www.pxisa.org

PCI eXtensions for Instrumentation (PXI) modular instrumentation delivers a rugged, PC-based high-performance measurement and automation system.



Three-Year Warranty

www.keysight.com/find/ThreeYearWarranty

Keysight's committed to superior product quality and lower total cost of ownership. Keysight is the only test and measurement company with three-year warranty standard on all instruments, worldwide. And, we provide a one-year warranty on many accessories, calibration devices, systems and custom products.



Keysight Assurance Plans

www.keysight.com/find/AssurancePlans

Up to ten years of protection and no budgetary surprises to ensure your instruments are operating to specification, so you can rely on accurate measurements.

Keysight Channel Partners

www.keysight.com/find/channelpartners

Get the best of both worlds: Keysight's measurement expertise and product breadth, combined with channel partner convenience.

www.keysight.com/find/usbscope

For more information on Keysight Technologies' products, applications or services, please contact your local Keysight office. The complete list is available at: www.keysight.com/find/contactus

Americas

Canada	(877) 894 4414
Brazil	55 11 3351 7010
Mexico	001 800 254 2440
United States	(800) 829 4444

Asia Pacific

Australia	1 800 629 485
China	800 810 0189
Hong Kong	800 938 693
India	1 800 11 2626
Japan	0120 (421) 345
Korea	080 769 0800
Malaysia	1 800 888 848
Singapore	1 800 375 8100
Taiwan	0800 047 866
Other AP Countries	(65) 6375 8100

Europe & Middle East

Austria	0800 001122
Belgium	0800 58580
Finland	0800 523252
France	0805 980333
Germany	0800 6270999
Ireland	1800 832700
Israel	1 809 343051
Italy	800 599100
Luxembourg	+32 800 58580
Netherlands	0800 0233200
Russia	8800 5009286
Spain	800 000154
Sweden	0200 882255
Switzerland	0800 805353
	Opt. 1 (DE)
	Opt. 2 (FR)
	Opt. 3 (IT)
United Kingdom	0800 0260637



Unlocking Measurement Insights